

# COMMUNITY CALENDAR

## SPECIAL EVENTS

**Bike to Work Day**, May 18, annual and national celebration of bicycle commuting. Twenty-three energizer stations in the city with free snacks and goodies. Morning celebration at City Hall, 8-8:30; after-work party with refreshments and raffle, 111 Minna off Second Street, 6-9 p.m. Information: 431-BIKE.

**Fifth Annual Sixth Street Fair**, June 10, Minna Alley off Sixth, 11 a.m.-4 p.m. Two stages of live music, street performers, free haircuts and manicures, dozens of social service providers, free disaster preparedness kits, hot dogs and bags of groceries. Games, face-painting and a bouncy house for the kids; chess and bridge matches for seniors. Information: Lisa Block: 538-8100 x202.

**Hope and Healing in a Time of War**, through June 24, SomArts Cultural Center, 934 Brannan, Tues.-Fri., 2-7 p.m., and Sat. 1-5 p.m., free. Co-sponsored by Asian Pacific Islanders Cultural Center and Queer Cultural Center, the exhibition demonstrates visual artists' role in spreading hope in increasingly violent times. Information: SomArts863-1414

## COMMUNITY: REGULAR SCHEDULE

### HOUSING

**Supportive Housing Network**, 4th Thursday of the month, 3-5 p.m., location TBA. Contact: Alecia Hopper, 421-2926 x302.

**Tenant Associations Coalition of San Francisco**, 1st Wednesday of the month, noon, 201 Turk Community Room. Contact Michael Nulty, 339-8327. Resident unity, leadership training, facilitate communication.

### HEALTH AND MENTAL HEALTH

**CMHS Consumer Council**, 3rd Monday of the month, 5:30-7:30 p.m., CMHS, 1380 Howard, Rm. 537. Contact: 255-3428. Advisory group of consumers from self-help organizations and other mental health consumer advocates. Open to the public.

**Health & Wellness Action Advocates**, 1st Thursday of the month, 1-3 p.m., Mental Health Association, 870 Market, Suite 928. Contact: 421-2926 x306.

**Healthcare Action Team**, 2nd Wednesday of the month, Quaker Center, 65 Ninth St., noon-1:30. Focus on increasing supportive home and community-based services, expanded eligibility for homecare and improved discharge planning. Light lunch served. Contact: Aaron Wagner, 703-0188 x304.

**Hoarders and Clutterers Support Group**, 2nd Monday and 4th Wednesday of each month, 6-7 p.m. 870 Market St., Suite 928.

Contact: 421-2926 x306.

**Mental Health Board**, 2nd Wednesday of the month, 6:30-8:30 p.m., City Hall, room 278. CMHS advisory committee, open to the public. Contact: 255-3474.

**National Alliance for the Mentally III-S.F.**, 3rd Wednesday of the month, 6:30-8:30 p.m., Family Service Agency, 1010 Gough, 5th Fl. Contact 905-6264. Family member group, open to consumers and the public.

### SAFETY

**Crime and Safety Committee**, meets bimonthly on the Wednesday after the first Monday, SOM-PAC, 1035 Folsom, 6 p.m. Information: 487-2166 or www.sompac.com.

**North of Market NERT**, bimonthly meeting. Contact Lt. Erica Arteseros., S.F. Fire Department, 970-2022. Disaster preparedness training by the Fire Department.

**SoMa Police Community Relations Forum**, 4th Monday of the month, 6-7:30 p.m. Location changes monthly. To receive monthly information by e-mail, contact Lisa Block, 538-8100 ext. 202 Lblock@iisf.org.

**Tenderloin Police Station Community Meeting**, last Tuesday of the month, 6 p.m., police station Community Room, 301 Eddy. Contact Susan Black, 345-7300. Neighborhood safety.

### NEIGHBORHOOD IMPROVEMENT

**Alliance for a Better District 6**, 2nd Tuesday of the month, 6 p.m., 301 Eddy. Contact Michael Nulty, 820-1560 or sf\_district6@yahoo.com. Districtwide association, civic education.

**Boeddeker Park cleanup**, 3rd Saturday of the month, 9-noon, organized by the Friends of Boeddeker Park. To RSVP to work or for information, contact Betty Traynor at the Neighborhood Parks Council, 621-3260.

**Central City Democrats**, meets four times a year, 301 Eddy St. Community Room. Addresses District 6 residential and business concerns, voter education forums. Information: 339-VOTE (8683) or centralcitydemocrats@yahoo.com.

**Community Leadership Alliance**, a chartered democratic organization. Quarterly informational forums with guest presenters and speakers, sharing news of upcoming events, proposals, resources. Meetings are first Thursday in Jan, April, July, Oct. Location information: David Villa-Lobos, admin@CommunityLeadershipAlliance.net

**Friends of Boeddeker Park**, 2nd Thursday of the month, 5-6:30 p.m., Boeddeker Rec Center, 240 Eddy. Plan park events, activities and improvements. Contact: 552-4866.

**Gene Friend Recreation Center Advisory Board**, 3rd Thursday of the month, 5 p.m. Board works to protect SoMa resources for children, youth, families and adults. Gene Friend Recreation Center, 270 Sixth St. Information: 554-9532

**Mid-Market Project Area Committee**, 2nd Wednesday of the month, 5:30 p.m., Ramada Hotel, 1231 Market. Contact Carolyn Diamond, 362-2500. Market Street redevelopment on Fifth to Tenth street.

**North of Market Planning Coalition**, 3rd Wednesday of the month, 6 p.m., 301 Eddy. Contact: 820-1412. TL 2000, neighborhood planning.

**North of Market/Tenderloin Community Benefit District**, 1st Thursday of the month, noon, 111 Jones conference room. Interim board meeting. Contact Elaine Zemora, district manager, 440-7570.

**SoMa Leadership Council**, 3rd Wednesday of the month, 6 p.m., The Arc, 1500 Howard St. at 11th. Emphasizes good planning and good government to maintain a diverse, vibrant, complete neighborhood. Contact: Jim Meko, 624-4309 or jim.meko@com-cast.net.

**South of Market Project Area Committee**, 3rd Monday of the month, 6 p.m., 1035 Folsom, between 6th & 7th. Contact: SOM-PAC office, 487-2166.

**Tenderloin Futures Collaborative**, 2nd Wednesday of the month, 10 a.m., Tenderloin Police community room, 301 Eddy. Contact Jerry Jai at 358-3956 for information. Network of residents, nonprofits and businesses sharing information and taking on neighborhood development issues.

### SENIORS AND DISABLED

**Mayor's Disability Council**, 3rd Friday of the month, 1-3 p.m., City Hall, Rm. 400. Contact: 554-6789. Open to the public.

**Senior Action Network**, general meeting, second Thursday, 10 a.m.-noon, St. Mary's Cathedral. Monthly committee meetings, 965 Mission #700: Pedestrian Safety, third Wednesday, 10 a.m.; Senior Housing Action, third Wednesday, 1:30; Information: 546-1333 and www.senioractionnetwork.org.

**SUPERVISORS' COMMITTEES** City Hall, Room 263

**Budget Committee** Daly, Dufty, Peskin, Thursday, 1 p.m.

**City Services Committee** McGoldrick, Dufty, Ma, first and third Monday, 1 p.m.

**Land Use Committee** Maxwell, Sandoval, McGoldrick, Wednesday, 1 p.m.

## The making of grassroots politicians

► CONTINUED FROM PAGE 5

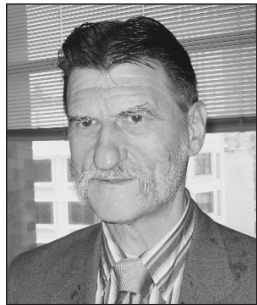
where he lived for 13 years, he was a precinct committee person, representing about 600 registered voters.

"California has 33 million people and 80 state Assembly members," Windrem says. "Oregon, by contrast, has three million people, 60 state representatives and precinct reps. We're one of the few states that doesn't elect precinct committee persons — but we really should."

Windrem, a mental health and patients rights activist who was board chairman of the Oakland Drop-In Center, wants to change the structure of the central committee.

"It should establish permanent precinct captains — give them moral support to be the eyes and ears of the party," he says.

James Soderborg is running a low-profile campaign for a seat on the Republican Central Committee in District 13.



**Bruce Windrem**

"I'm not on any Republican slate and I haven't gone after any endorsements," he says. "This is an experiment — I'm trying to see what I can achieve without the party."

Soderborg, a stock exchange member, was on the Contra Costa County Central Committee six years ago, appointed to fill a vacated seat. After moving to San Francisco, he ran for a seat here in 2004 and won — the top Republican voter-getter that year — but had to leave halfway through the term. Now he's trying again.

"On the Republican ticket in the city, it's hard to take the reins," he says, "but we can

influence what's happening, especially getting more people on city commissions to get a better balance. We add diversity."

Sue Bierman is running once more for a seat on the Democratic Central Committee, but says she doesn't remember how long she's been on it.

"I don't write these things down — maybe I should, but I don't."

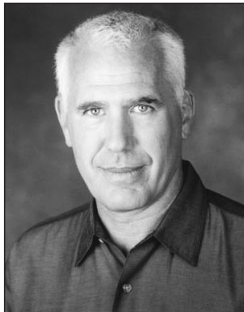
Her involvement in local politics spreads far and wide: Supervisor from 1996-2000; planning commissioner for 16 years; formerly on the Metropolitan Transportation Commission, the S.F. Bay Conservation and Development Commission, and the S.F. County Transportation Authority. Currently, she's on the Port Commission.

The Port Commission's Web site says she's been a central committee member since 1974. In 2004, she was the top Democratic vote-getter.

"I'm a good Democrat and the central committee is a place where we can pass resolutions that speak to a lot of problems," Bierman says.

The central committee's job is like no other, she adds. "People these days are so busy, and the media don't carry as much as they should about grassroots politics. People are always telling me how much they like our slate cards and other information because they have no other source of information. That's our main job: to inform people."

Nationally, Bierman says, the committee "has its hands full with trying to change things. I worked hard against Bush, and it's sad that our candidate couldn't unseat him. We do have to keep trying to get good people." ■



**James Soderborg**

### June 6, 2006 Primary Election

## CENTRAL CITY DEMOCRATS ENDORSEMENTS

### Assembly District #13 Democratic County Central Committee

**Sue Bierman**

**David Campos**

**Gilbert Criswell**

**Rick Galbreath**

**Michael Goldstein**

**Rick Hauptman**

**Joe Julian**

**Raphael Mandelman**

**Holli Thier**

**Bruce Windrem**

### State Senate District 8

**Leland Yee**

### State Assembly District 13

**Mark Leno**

### Superior Court Judge Seat 8

**Lillian Sing**

### San Francisco Ballot Issues

*No on Proposition D (Laguna Honda Hospital)*

**This is the official slate of endorsements of Central City Democrats**

**P.O. Box 420846**

**San Francisco, CA 94142-0846**

**centralcitydemocrats@yahoo.com**

**(415) 339-VOTE (8683)**